

Introduction of Jarvis CDE

香港互聯立方有限公司
isBIM Limited



Design + Data + Asset

Jarvis Common Data Environment (CDE)



Applicant name: isBIM Limited

Product name: Jarvis CDE

Specification: Support private deployment, it can run in independent network. Using B/S structure, no need to install any plugin. Support to operate on major browser like IE 11, Chrome, Firefox etc.

• **Technology Used:**

DMS, AI, forge etc

• **Construction Process involved:**

Design & Construction Stage

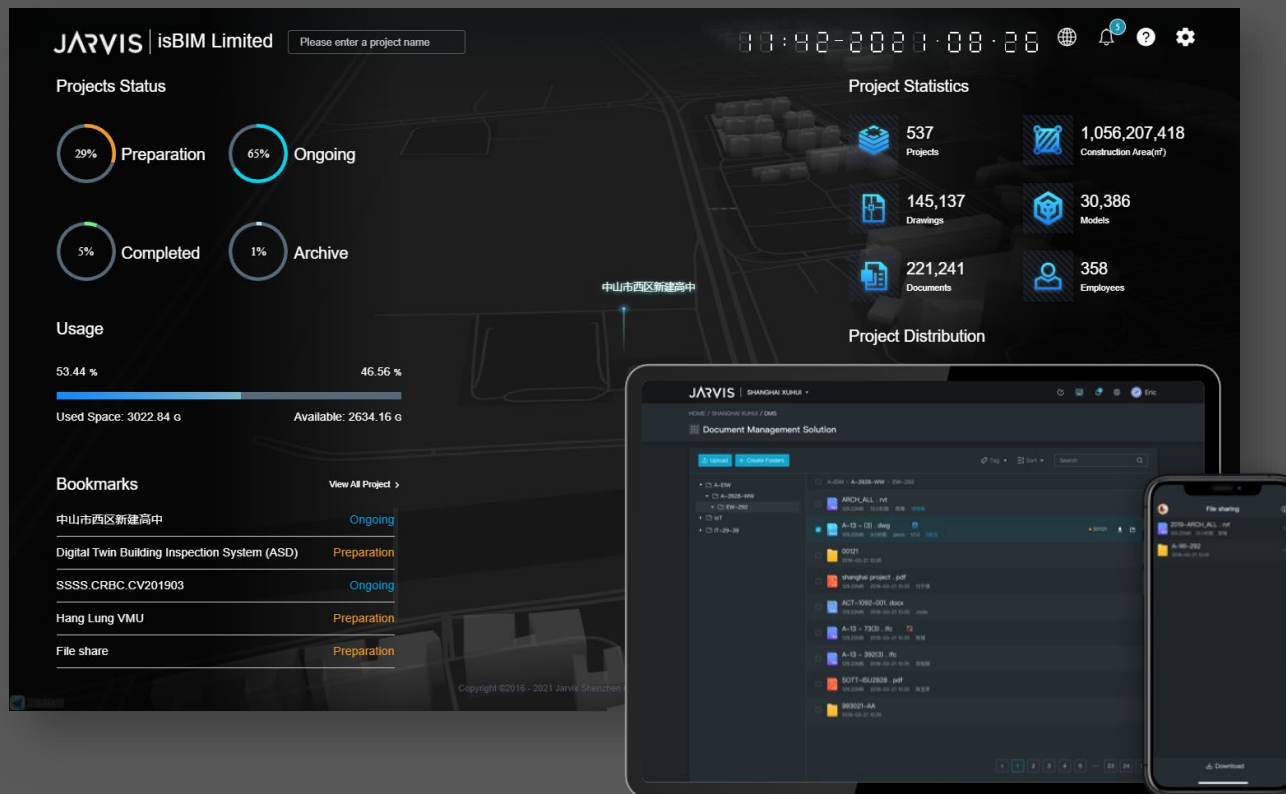
Job Reference:

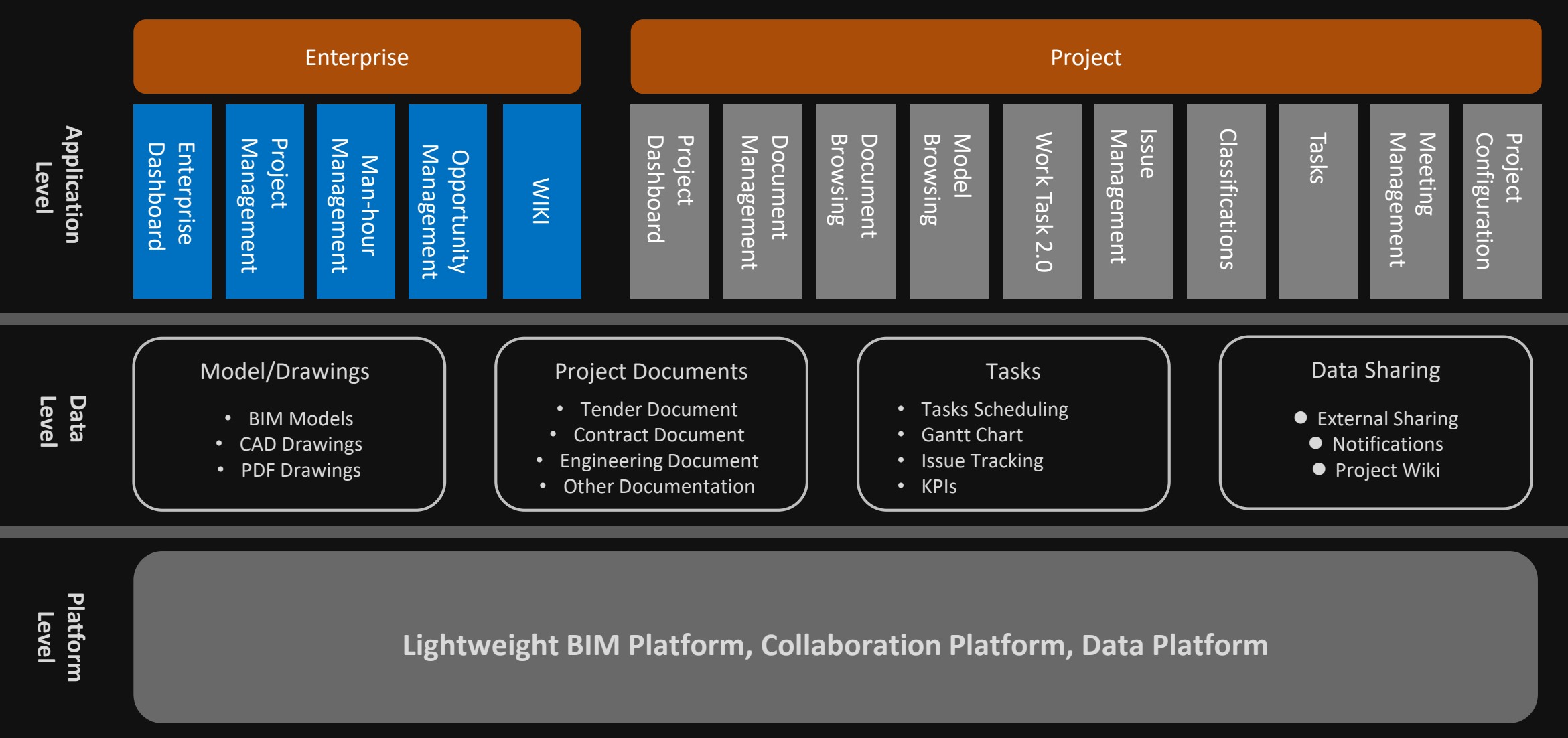
[JARVIS BIM Online Training Platform, Guangxi (China), adoption, 2021]

[Hang Lung BIM CDE for Electrical Road Project, Hong Kong, adoption, 2021]

[Tencent Tenova BIM CDE, Shenzhen(China), adoption, 2021]

[Hang Lung BIM CDE for Amoycan Industrial Center Project, Hong Kong, adoption, 2021]





Key Improvement in Construction Process-Productivity | JARVIS

Jarvis can set up an easy to help you collaborate in multiple projects efficiently. It can preserve project process data and synchronize project data / progress at the same time. After the project was completed, it can be archived easily and keep various type of project data and documents, to accumulating enterprise's project data and experience.

□ With high-speed cloud network and AI smart chatbot, it can greatly improve project productivity.

Cloud dish DMS in enterprise level

Data storage is secure and stable, it adopt cloud server, all data is automatically backup and effectively to prevent damage from external caused (natural disasters computer crashes)

Access speed is extremely fast

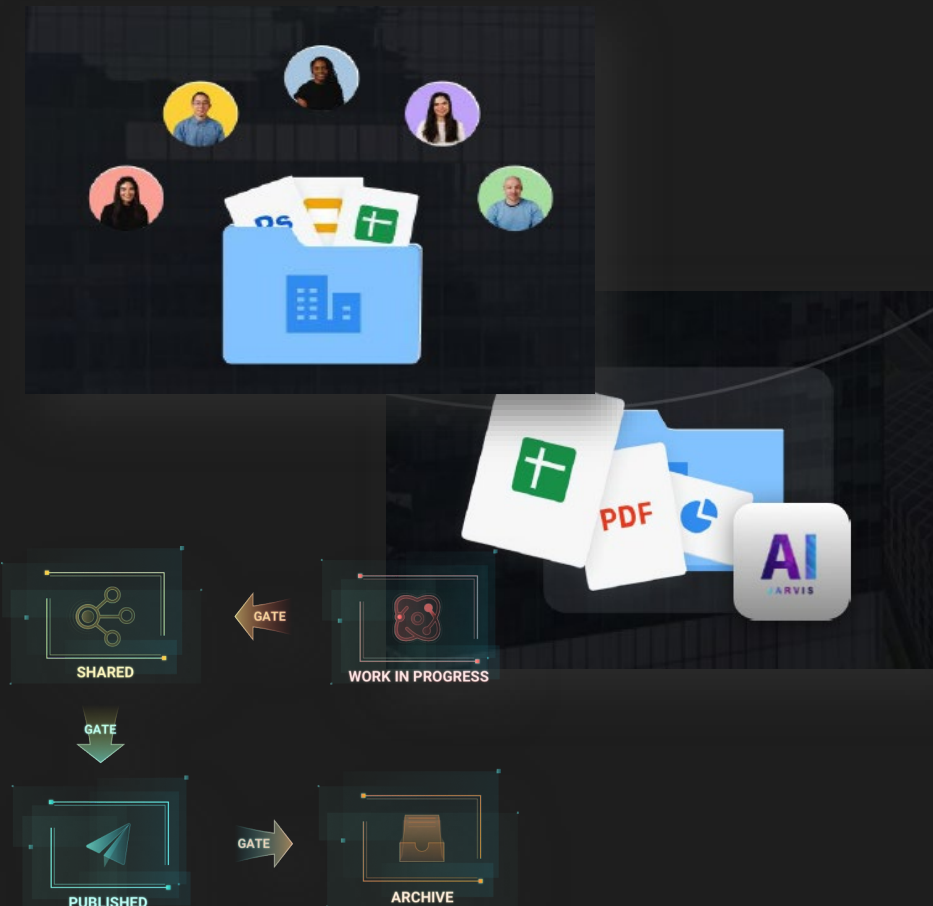
It is unlimited about the uploading and downloading speed and privatization deployment enjoys an acceleration.

AI Smart Assistant

With smart searching, you can quickly search, share, and display platform files on the phone, including drawings, models, etc..

Follow ISO19650 Standard

Jarvis CDE follow the ISO19650 standard regarding model and document control



Key Improvement in Construction Process - Quality

Jarvis CDE is one simple, intelligent and efficient coordination platform on construction project. It is a cross-enterprise and cross-project coordination platform for engineering and construction industry. With document management, task collaboration as the core, it helps industry users to achieve project process data management and efficient cohabitation of project teams

□ With the cloud-based BIM collaboration, you can check the model and drawings anytime anywhere to maintain the BIM and construction quality.

Open model and file anytime anywhere

No need to install any application, free to open in the web page.

Light-weighting and digitalization

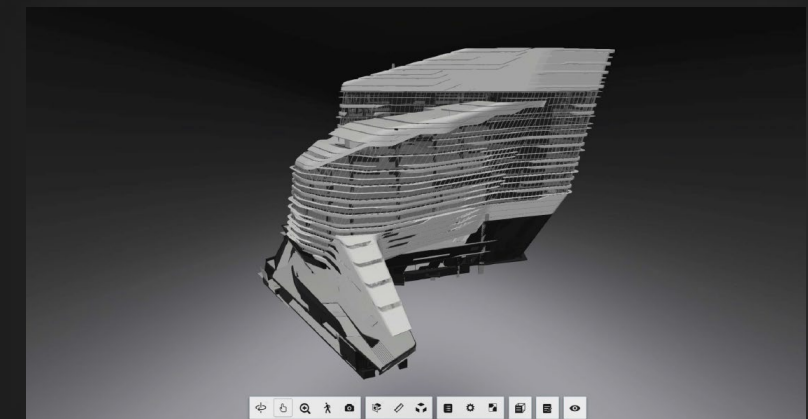
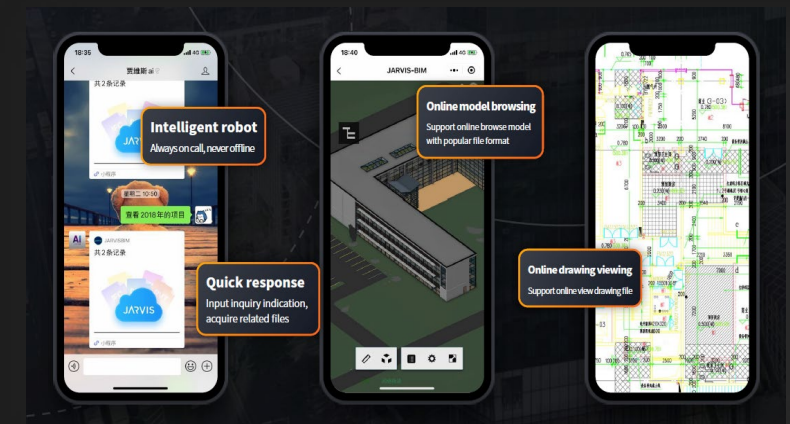
File size will be greatly reduced, very easy to view models, drawings, PDFs, and online office

Support full lifecycle project management

Support multi-regional, multi-participant for document collaboration, task management and other functions

Visually display the status of the enterprise projects

Centrally store project team data in a file management system, to easily and securely share and collaborate with team members.



Innovation Features

Core Technology: Jarvis AI System, Document Management System

Patent: Certificate No. 04833602 (AI System)

Comparison with current practice and popular models:

This is brand new technology to combine AI system and CDE, with Jarvis AI, you can use Wechat and LINE and quickly check and call out project file, drawing and model and monitor videos.

Comparison with similar Pre-approved list products and competitors:

Specification	Jarvis CDE	Competitor A
Key Spec 1	Project dashboard with 3D map	Project dashboard with 2D map
Key Spec 2	Option for private cloud implementation	Public cloud only
Key Spec 3	Customers can use their own domain	Autodesk manages domain.
Key Spec 4	Public sharing via link with access control. Private sharing with project members.	Private sharing with project members only.
Key Spec 5	Search contents inside documents and models	Not available in this product.

First Launch Date: 2018.09 first launch & 2021.08 updated version

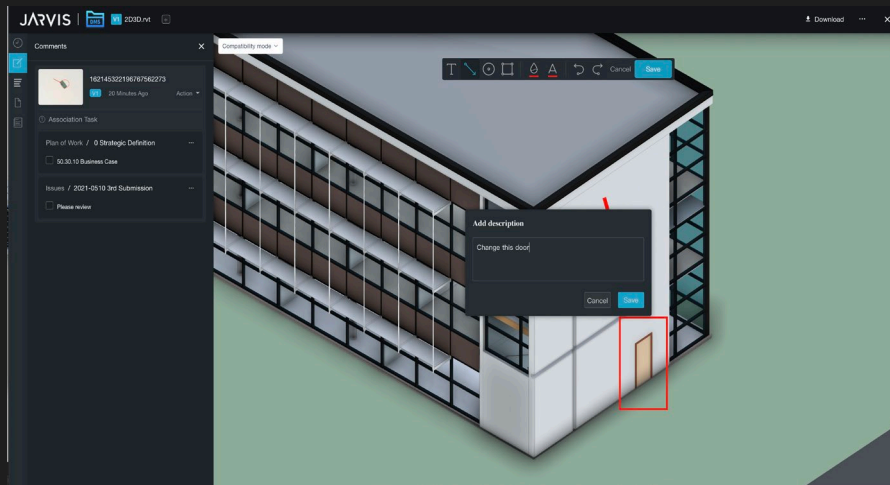


Adoption Example

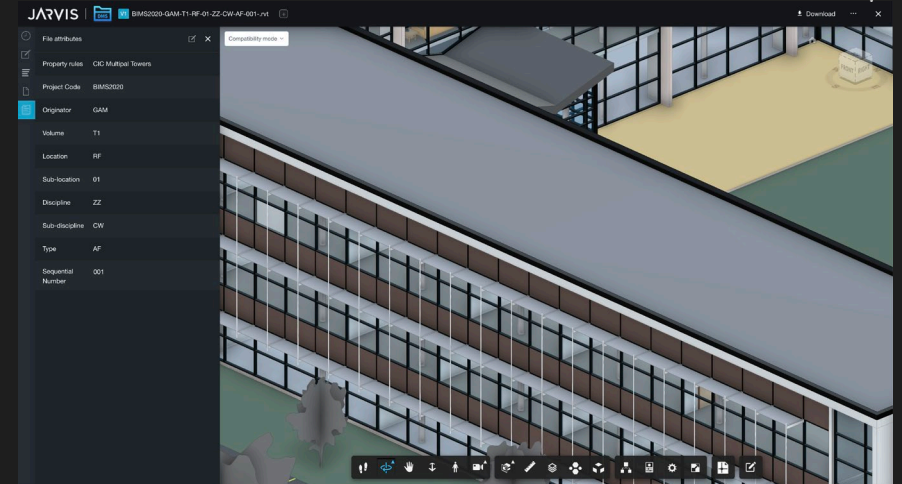
Project for illustration: Tencent Tenova BIM CDE, Shenzhen(China), adoption, 2021

Work Process: Design Stage

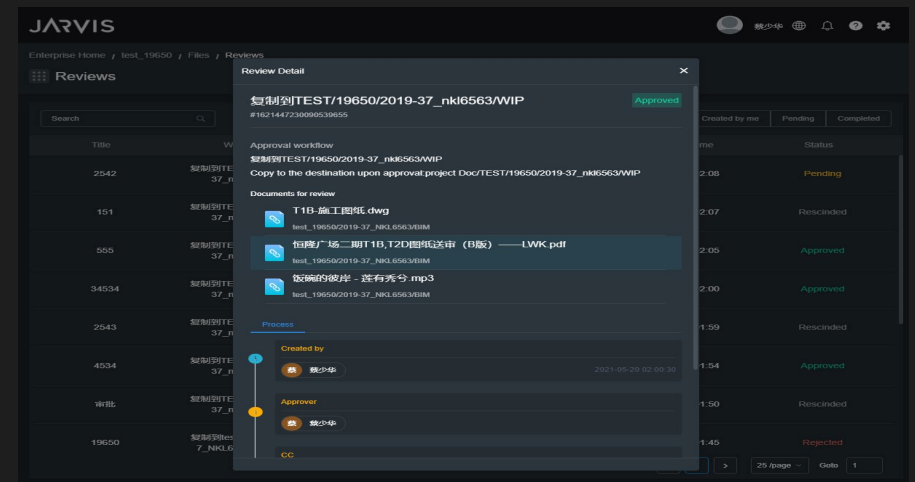
Use/Function in project: Modeling coordination, Issue management, Task management



Support review, comment, and mark-up procedures for Documentation formats and versions as documented in the BIM Project Execution Plan;



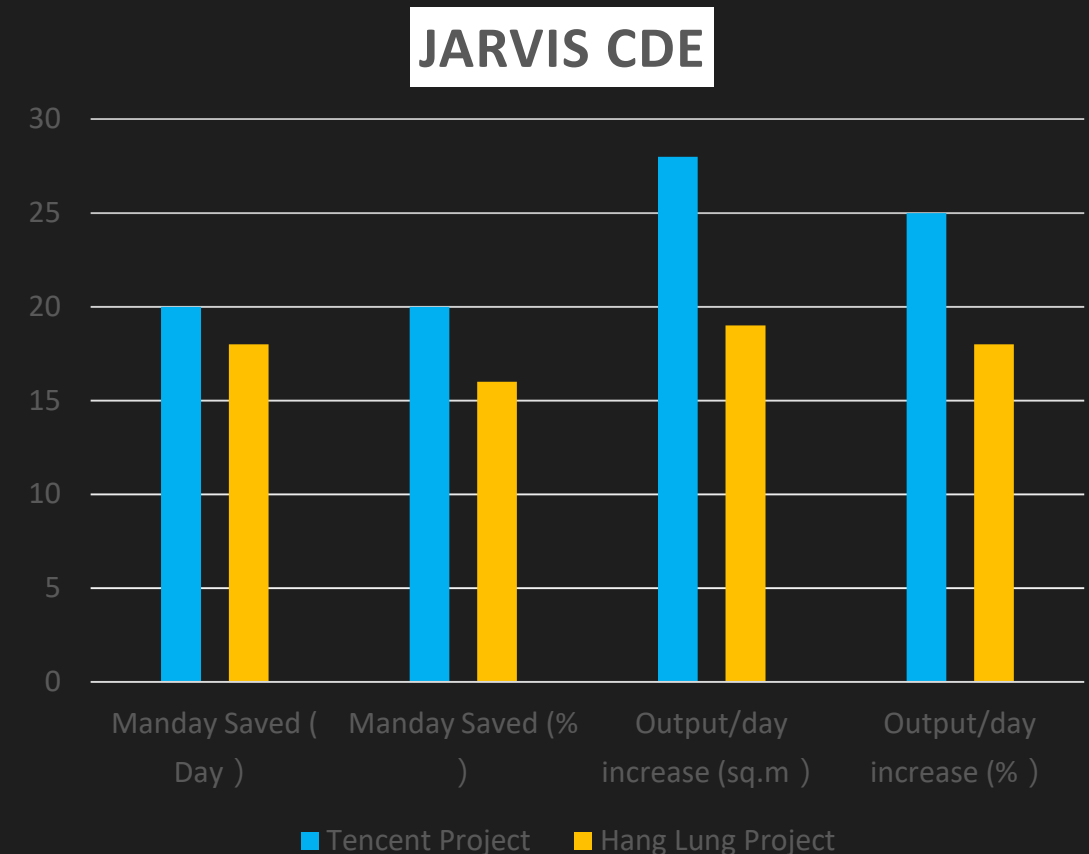
Support uploading, downloading, Information Models and documentation to facilitate retrieval of documents



Provide a workflow for managing information process

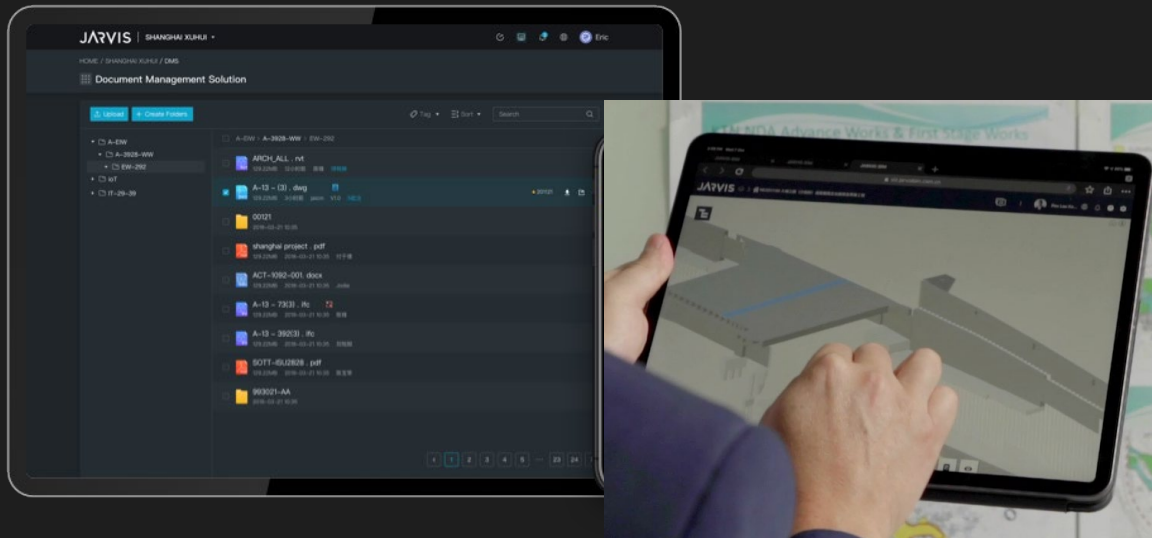
Benefits – Productivity

- Improve productivity by:
 - Provide a user-customisable workflow for document submission and approval
 - Support review, comment, and mark-up procedures for Information Models in the agreed proprietary and open file delivery formats and versions as documented in the BEP
 - Allow access from portable devices and web applications;
 - AI Chatbot System
- Traditional Output:
 - Modeling sharing through email or drive
 - Searching document within thousands of folders
- Output by Jarvis CDE
 - Modelling sharing directly to the right person
 - Chat to the AI and call out the right files directly
- Total Saving in Mandays
 - 20%
- Total Saving in Project Period
 - 20% project duration



Benefits – Quality

- Improve quality by:
 - Issue Management;
 - Task Management ;
 - Model Viewer;
 - Project document management
 - Access for portable device and web applications



New method: With Jarvis CDE, all information is stored digitized in 3D view, and data is consistent. It is a control center for all project-specific documents, plans, drawings and models. With Artificial Intelligence Chatbots, will change the way we retrieve the information and files. Also, with the issue management, all issues is traceable and will be solved instantly, to make sure the coordination and model quality.



Traditional method: All information in drawings, it is difficult to understand 2D information intuitively and the information is scattered. And also, it is difficult to communicate with unfamiliar information.

Thank you!



Wilson Li



Vicky Leung