

PA20-025 SmartWorks

1. New Features:

- Uplink connectivity: LoRa

➤ Benefits:

- Support outdoor and large area deployment (up to 2~8 km depends on dense/open area)
- More cost effective since less gateway equipment required
- Redesign the sensor casing to fit for different construction company's helmet requirement
- Support GPS for outdoor location
- Superior operating time (up to 14 days)



LoRaWAN Gateway

PA20-025 SmartWorks

2. New Function:

- Worker Job Attendance Report

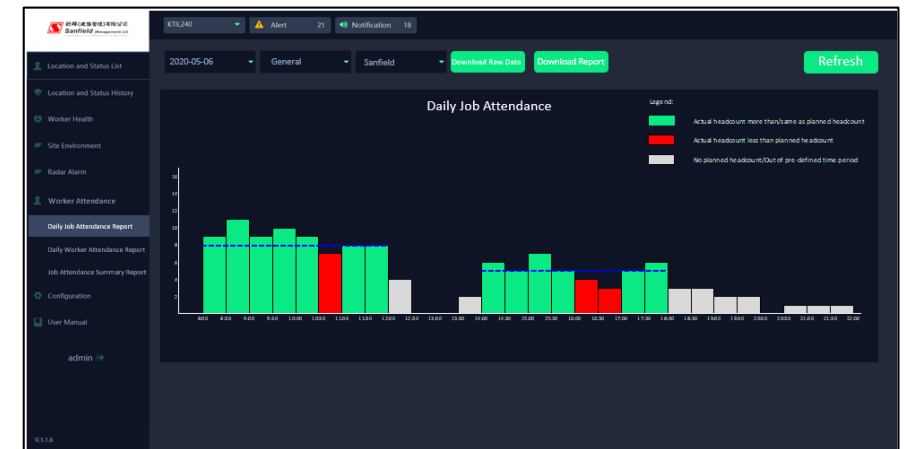
➤ Features:

- Real-time Attendance Record by work type, period & zones
- Provide Attendance Report
 - Daily Job & Worker Attendance
 - Job Attendance Summary

➤ Benefits:

- Increase work efficiency by digitalizing existing manual job supervision workflow

Date	Morning	Afternoon	Overtime
22-May-20 (Fri)	100%	98%	-
23-May-20 (Sat)	-	-	-
24-May-20 (Sun)	90%	100%	-
25-May-20 (Mon)	85%	110%	-
26-May-20 (Tue)	100%	100%	100%
27-May-20 (Wed)	95%	98%	-
28-May-20 (Thu)	94%	105%	90%



PA20-025 SmartWorks

3. New Function:

- Smart Padlocks
- Features:
 - Access control by smart padlock for authorized person only
 - Real-time monitoring of padlock status with alert
 - Locked / Unlocked / Damaged / Low battery / Door open / Door close
- Applications:
 - Electrical box access, inventory room access or Temporary fence locking
- Benefits:
 - Digitalize key management by eliminating physical door keys with digital key on mobile
 - Provide remote visibility on locked property status

