

Product Presentation

Applicant Name: **Sanroc International (HK) Limited**

Product Name: **Jekko SPX424**

Specification:

Dimensions : 3,160 x 780 x 1,870 mm

Weight : 2,030 kg (4,465 lb)

Telescopic boom : 2.6 - 8.5 m

Max outriggers load : 2,200 kg



- Core Functions:

 - Lifting operation**

- Technology Used:

 - 1.) Automatic stability control

 - 2.) Radio Remote control

 - 3.) Extendable crawler tracks

 - 4.) J-CON (remote after sales system)

 - 5.) Plug and play system for different attachments

 - 6.) 3 different power (Diesel/Petrol engine ,
Lithium/standard battery, Electric power pack

- Construction Process involved:

 - Lifting operation**

- Key Improvement in Construction Process:

 - Productivity

 - Safety

 - Environmental

Job Reference:

[project name 1, location, trial/adoption, year]

[project name 2, location, trial/adoption, year]

[project name 3, location, trial/adoption, year]

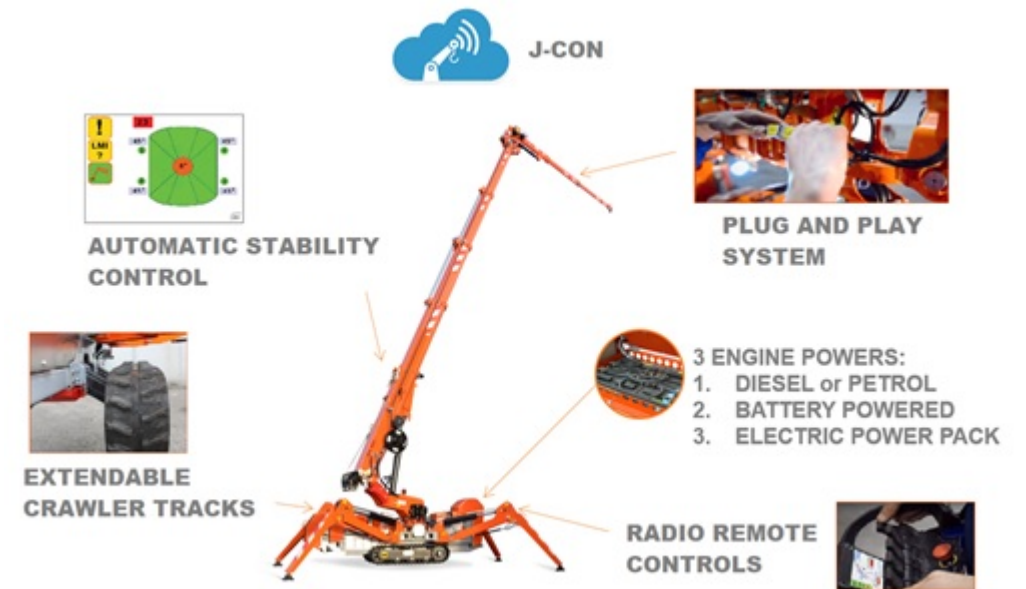
[project name 4, location, trial/adoption, year]

Innovative Features

- Core Feature :
 - 1.) Electronic LMI - Automatic stability control
 - 2.) Radio Remote control
 - 3.) Extendable crawler tracks
 - 4.) J-CON (software for remote monitoring)
 - 5.) Plug and play system for different attachments
 - 6.) 3 different power (Diesel/Petrol engine, Lithium/standard battery, Electric power pack)

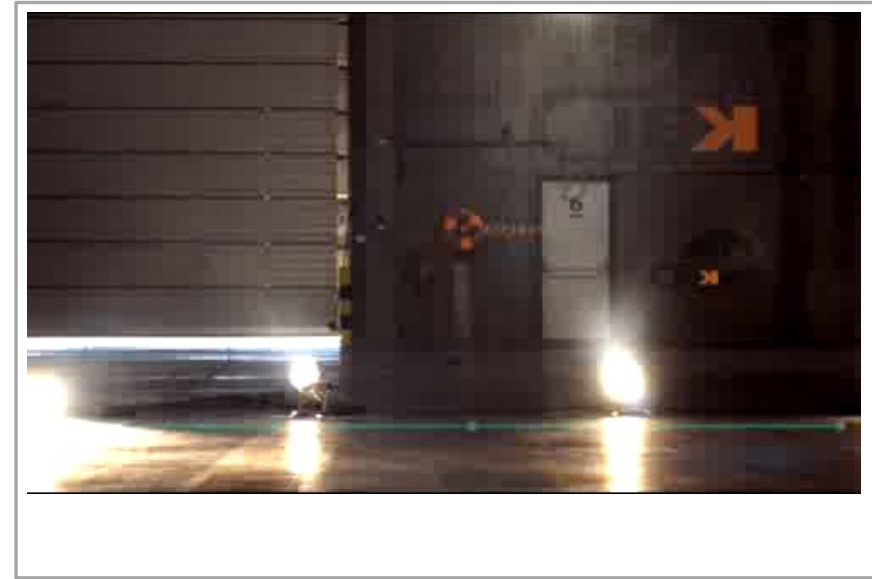
Comparison with current practice and popular models:

- Unique function for all core feature
- First Launch Date: 2014 in Italy and 2019 in Hong Kong
- Internationally standards
 - EN13000 standard



Adoption Example

- Project for Illustration: [Lohas ph 7 , TKO HK, 2019]
- Work Process: **glass installation**
- Use/ Function in project:
 - **Lifting the glass to the ceiling**



Video : overview of SPX424



Photo : SPX424 at Lohas ph7 job-site



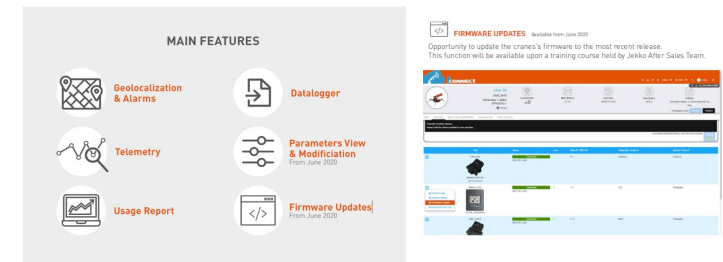
Photo : SPX424 at Lohas ph7 job-site

Benefits – Productivity (if applicable)

- Improve productivity by:
 - Radio Remote control for reducing required man power
 - J-Con to improve remote assistance operations and to have an overall view of the crane thanks to the telemetry system
 - Extendable Crawler Tracks (45°) to increase ground clearance and steering
- Total Saving in Mandays:
 - 1 man-day per day
- Total Saving in Project Period:
 - 14 mandays



Extendable crawler tracks



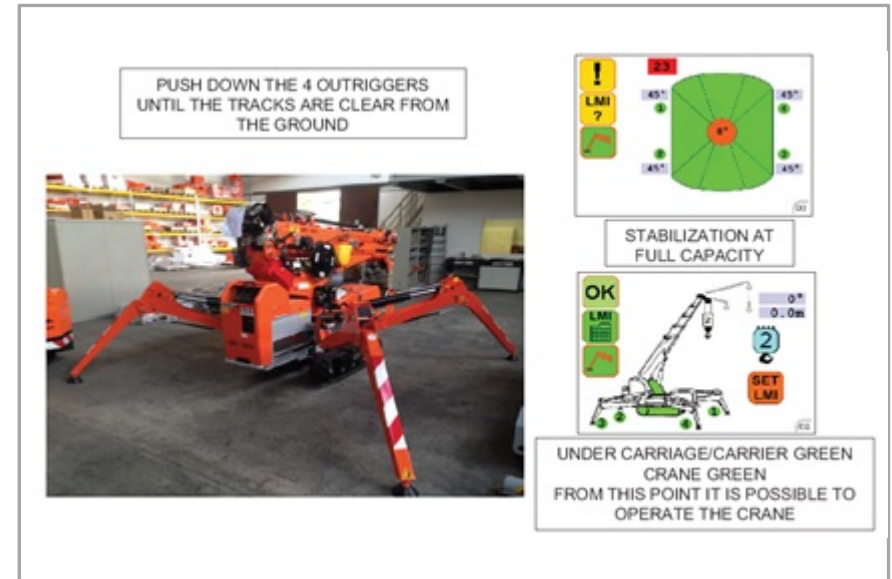
J-CON (software for remote monitoring)



Radio Remote control

Benefits – Safety

- Improve Safety by:
 - [eliminated Human Error on ASLI setting] by 100%
 - [safety tracking on the operation data] allowable



[Automatic Stability Control]



[Plug&Play System control]

Benefits – Environmental

- With lithium/standard battery or electric power pack it is possible to operate indoor silently and without any kind of emission
- Improve Environmental Performance by:
 - Reduce [Air pollution] by 100% [unit]
 - Reduce [CO2 emission] by 100% [unit]
 - Reduce [fuel consumption] by 100% [unit]

3 DIFFERENT POWER



Diesel or petrol engine



Lithium or standard battery



Electric power pack