



CONSTRUCTION INDUSTRY COUNCIL  
建造業議會

適用於裝飾及維修業的安全產品\*  
Safety-related Solutions Applicable to  
Renovation, Maintenance, Alteration and  
Addition ( RMAA ) Works\*

19 Jan 2026

\*常用安全智慧工地系統產品組合以外的產品

Products other than those in the Sample Package of Commonly-used Smart Site Safety System (4S)

## 其他適用於大廈維修、保養、改動及加建工程的安全系統（採用視情況而定） Other Safety Measures for RMAA Works (Optional)

採用煙霧探測器系統，機械式爬升工作台，或在棚架上安裝自動灑水系統及棚架連牆器感測器，能有效提升安全。

在適用及可行情況下，於熱工序作業區附近(包括逃生路線)安裝煙霧探測器，能在火災初期即時警示。

亦可考慮在工地主要入口、出入口及天面安裝監測攝影機，以監視獨立救生繩狀況、吊具狀況（如有）及棚架出入口情況，並在可行情況下於對面建築物安裝攝影機以監測棚架狀況，有助於降低風險並提升安全。

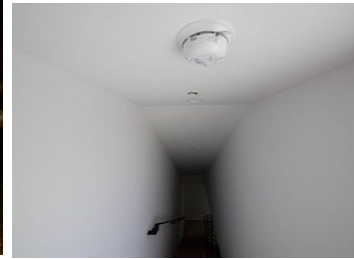
前線員工佩戴穿戴式攝影機可錄影工作環境，記錄合規情況及事故記錄來提高工作透明度、責任追蹤及工友警覺度，以提升工地安全。

Adopting a **Smoke Detection System**, **Tower Working Platform**, or installing an **Water Mist System** and **Scaffold Putlog Sensors** on scaffolding can effectively enhance safety.

Whenever applicable and practicable, installing **smoke detectors** near hot work locations (including escape routes) can detect fire at early stage.

Installing **general surveillance cameras** at the main entrance, site access points, and roof areas to monitor lifelines, lifting appliance setups (if any), and scaffold access points, as well as on opposite buildings, where practical, to monitor scaffold conditions, to improve overall site safety.

Frontline staff wearing **wearable surveillance cameras** can enhance site safety through recording site environment, compliance conditions and incident, improving accountability and thus cautiousness of workers.



熱工序位置附近擺放感應器  
Install sensors near hot work locations



自動灑水系統  
Water Mist System on Scaffolding



機械式爬升工作台  
Tower Working Platform



棚架連牆器感測器台  
Scaffold Putlog Sensors Platform



穿戴式攝影機  
Wearable surveillance cameras



# 附件 A Annex A – 補充資料 Supplementary Information

CITF預先批核棚架連牆器感測器參考資料  
Reference Material of CITF Pre-approved Scaffold  
Putlog Sensor System





# 其他 Others - 棚架連牆器感測器 Scaffold Putlog Sensor\*

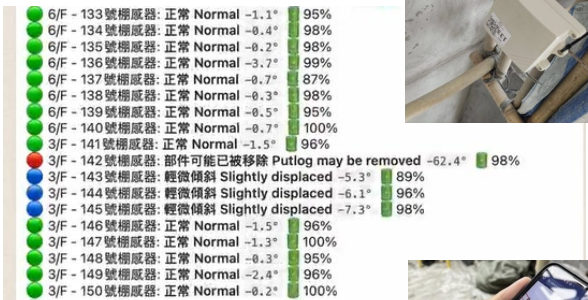
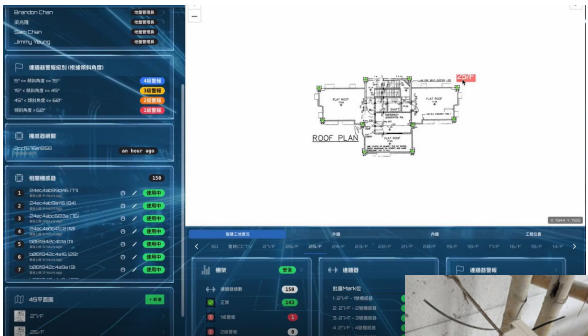
預先批核產品數目 No. of Pre-approved Products under CITF : 3

技術 Technology	PA25-167 藍牙信標技術 BLE Beacon Technology
說明 Description	<ul style="list-style-type: none"><li>感測器系統透過網狀網路和 4G 通訊網，偵測棚架連牆器間距和傾斜角度、振動情況以及環境條件（溫度、濕度和氣壓）Sensor system with 4G communication gateway via a mesh network to detect scaffold putlog spacing and inclination angle, vibration and environmental conditions (temperature, humidity, and air pressure)</li><li>以每 3 小時讀取一次數據計，電池壽命約 1 年 For reading taken at every 3 hours, ~1-year battery life</li><li>支援 7/24 全天候監控，可透過 WhatsApp、電子郵件和應用程式接收警報 7/24 monitoring with WhatsApp, email, and inapp message alerts</li></ul>
偵測覆蓋範圍 Detection Coverage	<ul style="list-style-type: none"><li>四級警報機制 4-Level Alert Mechanism:<ul style="list-style-type: none"><li>➢ P4 (注意Attention):偵測到輕微偏移 A slight shift is detected (5°-15°).</li><li>➢ P3 (提高注意Increased Attention):發生中度偏移 A moderate deviation occurred (15°-45°).</li><li>➢ P2 (緊急檢查Urgent Inspection):發生顯著偏移 A significant deviation (45°-60°).</li><li>➢ P1 (立即檢查Immediate Inspection):發生嚴重偏移/劇烈移動或潛在脫落 A critical deviation/ severe movement or potential detachment (&gt;60°).</li></ul></li></ul>
參考價格 Reference Price:	港幣HKD\$1,000/個 sensor （最少350個）(包括12個月平台及保養費)； 或 港幣HKD\$5,000/個 sensor （最少30個 至349個）(包括30個月平台及保養費連4次改位置)

\* 支援環境溫度測量 Support ambient temperature measurement



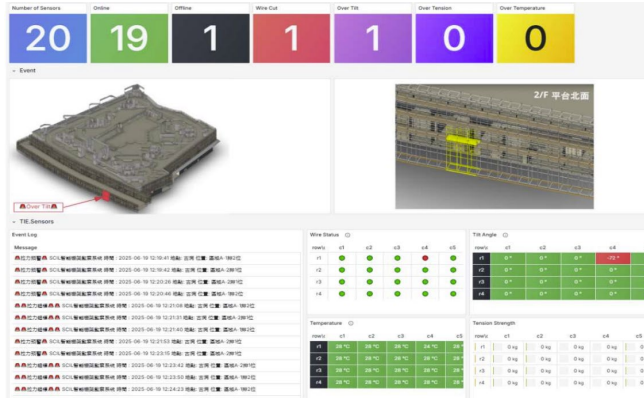
上述價格擷取自CITF預先核准名單中有關產品的核准價格(未扣除CITF資助)，僅供參考，實際市場價格可能有所差異。視系統需求而定，可能需額外支付安裝、整合及其他相關費用。The prices shown are based on the approved prices (before CITF subsidy) of corresponding products listed in the CITF Pre-approved List and are provided for reference only. Actual market prices may vary, and additional costs such as setup, integration, and other related expenses may apply depending on system requirements. 相關CITF預先批核產品 (截至2025年12月31日) Pre-approved Products under CITF (as of 31 Dec 2025) : PA25-113, PA25-167



# 其他 Others - 棚架連牆器感測器 Scaffold Putlog Sensor\*

預先批核產品數目 No. of Pre-approved Products under CITF : 3

技術 Technology	PA25-113 棚架感應器 Scaffold Sensor
說明 Description	<ul style="list-style-type: none"><li>直接安裝在連牆器上Installed directly on the scaffold putlog</li><li>觸發警報的情況Trigger an alarm if:<ul style="list-style-type: none"><li>i) 拉力低於或高於設定的安全值the tension force drops below or increases above the designated safety threshold;</li><li>ii) 連牆器被移除或損壞the putlog is removed or damaged;</li><li>iii) 環境溫度升高，以及早警示火災隱患 ambient temperature to provide eaely alert of fire hazards.</li></ul></li></ul>
偵測覆蓋範圍 Detection Coverage	感測器位置 At the sensor location
參考價格 Reference Price	每月每個 \$280 元（租賃）\$280 /number/month (rental); 或or 每套 \$1,680 元（購買）\$1,680 per unit (purchase)



\* 支援環境溫度測量 Support ambient temperature measurement

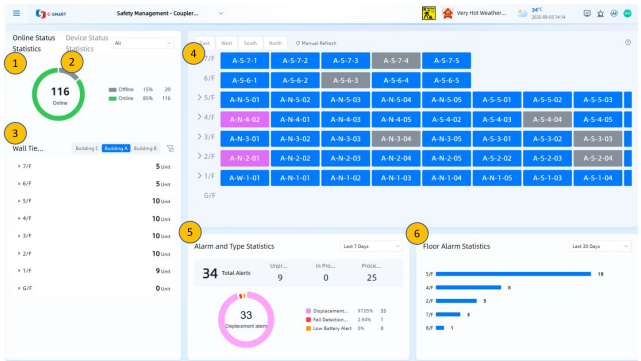



上述價格擷取自CITF預先核准名單中有關產品的核准價格(未扣除CITF資助)，僅供參考，實際市場價格可能有所差異。視系統需求而定，可能需額外支付安裝、整合及其他相關費用。  
The prices shown are based on the approved prices (before CITF subsidy) of corresponding products listed in the CITF Pre-approved List and are provided for reference only. Actual market prices may vary, and additional costs such as setup, integration, and other related expenses may apply depending on system requirements.  
相關CITF預先批核產品 (截至2025年12月31日) Pre-approved Products under CITF (as of 31 Dec 2025) : PA25-113, PA25-167

# 其他 Others - 棚架連牆器感測器 Scaffold Putlog Sensor

預先批核產品數目 No. of Pre-approved Products under CITF : 3

技術 Technology	PA25-168 棚架連牆器感應器 Scaffold Putlog Sensor
說明 Description	<ul style="list-style-type: none"><li>易於直接安裝在連牆器上 Easily installed directly on the scaffold putlog</li><li>防水防塵，電池壽命長達2年 Waterproof and dustproof, battery life up to 2 years</li><li>多軸感測器準確監測連牆器狀態 Multi-axis sensors accurately monitor wall tie status</li><li>觸發警報的情況 Trigger an alarm if:<ul style="list-style-type: none"><li>i) 任何X/Y/Z軸位移 Any X/Y/Z axis displacement;</li><li>ii) 連牆器被移除或損壞 Putlog is removed or damaged</li></ul></li><li>警報推送到雲端管理平台以即時處理 Alerts are pushed to cloud management platform for instant action</li></ul>
偵測覆蓋範圍 Detection Coverage	感測器位置 At the sensor location
參考價格 Reference Price	感應器：每個 \$480 元; 設置及平台費：每單\$3,710（同品牌平台）或每單\$20,000（第三方平台）；額外感應器的平台費: 每個 \$65 元; 服務月費：每個感應器\$630 Sensor: \$480 / no.; Set-up & System License: \$3,710/ item (platform from same vendor) or \$20,000/ item (3 <sup>rd</sup> party platform); System license for Additional Sensor: \$65/ no.; Monthly Service Charge: \$630/ sensor



 上述價格擷取自CITF預先核准名單中有關產品的核准價格(未扣除CITF資助)，僅供參考，實際市場價格可能有所差異。視系統需求而定，可能需額外支付安裝、整合及其他相關費用。  
The prices shown are based on the approved prices (before CITF subsidy) of corresponding products listed in the CITF Pre-approved List and are provided for reference only. Actual market prices may vary, and additional costs such as setup, integration, and other related expenses may apply depending on system requirements.  
相關CITF預先批核產品 (截至2025年12月31日) Similar Pre-approved Products under CITF (as of 31 Dec 2025) : PA25-113, PA25-167, PA25-168

# 附件 B Annex B – 補充資料 Supplementary Information

CITF預先批核煙霧探測器系統參考資料  
Reference Material of CITF Pre-approved Smoke  
Detector System

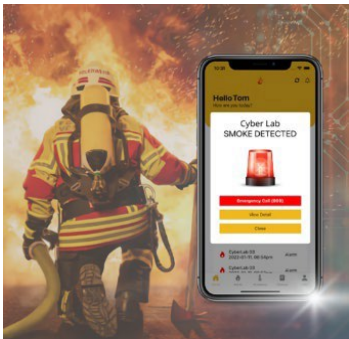




# 其他 Others - 煙霧探測器系統 Smoke Detector System

## 預先批核產品數目 No. of Pre-approved Products under CITF : 2

技術 Technology	<ul style="list-style-type: none"><li>雲端式網頁 / 流動應用程式</li><li>物聯網 ( IoT )</li><li>Cloud-based Web/Mobile Application</li><li>Internet of things (IoT)</li></ul>
說明 Description	<ul style="list-style-type: none"><li>透過火警及煙霧探測器偵測危險</li><li>即時警報資訊將傳送至使用者的手機</li><li>Detect hazard by fire and smoke detector</li><li>Real-time alert information will be sent to user's phone</li></ul>
偵測覆蓋範圍 Detection Coverage	視乎現有火警監測系統的覆蓋範圍 ( 通常為探測器正下方的鄰近區域 ) Depends on the covered area of the existing fire monitoring system (normally in the close vicinity immediately below the detector).
參考價格 Reference Price	PA21-024 : HK\$230,000元 / 兩年單一工地版本(8個感應器) PA25-050 : 系統成本為HK\$128,050元，採用20個煙霧探測器及相關網絡費用 ( 2023年價格 ) PA21-024 : HK\$230,000 / 2-year single-site enterprise version (for 8 sensors) PA25-050 : System cost is HK\$128,050 with adoption of 20 nos. of smoke detectors and related network cost (2023 price)
參考安裝位置 Reference Installation Location	火警風險較高位置，例如機房、物料存放處、休息室、主要走火通道等。 Areas with higher fire risks, e.g. plant rooms, material stores, rest rooms, escape routes etc.



# CITF 僅支持與網頁或流動系統 / 應用程式整合的火災或煙霧探測系統。  
CITF only supports fire or smoke detector systems that are integrated with a web or mobile system/app.

上述價格擷取自CITF預先批核名單中有關產品的核准價格(未扣除CITF資助)，僅供參考，實際市場價格可能有所差異。視系統需求而定，可能需額外支付安裝、整合及其他相關費用。  
The prices shown are based on the approved prices (before CITF subsidy) of corresponding products listed in the CITF Pre-approved List and are provided for reference only. Actual market prices may vary, and additional costs such as setup, integration, and other related expenses may apply depending on system requirements.  
相關CITF預先批核產品 (截至2025年12月31日) Pre-approved Products under CITF (as of 31 Dec 2025) : PA21-024, PA25-050

可以考慮在火警風險較高位置，例如無人看管物料存放地點安裝煙霧探測器 Consider installing smoke detectors at areas with higher fire risks, such as unattended storage locations



## 供應商聯絡資訊 Vendors Contact Details

其他 Others -

煙霧探測器系統 Smoke Detector System及 and棚架連牆器感測器 Scaffold Putlog Sensor

預先批核產品 編號 PA code	產品類型 Product Type	產品名稱 Product name	供應商名稱（英文） Vendor (Eng)	供應商名稱（中文） Vendor (Chi)	Contact number	Contact Email
PA21-024	煙霧探測器系統 Smoke Detector System	FireWatcher Fire Alarm Web Application	Letsapp Limited	Letsapp Limited	5225 4679	/
PA25-050	煙霧探測器系統 Smoke Detector System	FireAlert Mobile App	FireAlert Limited	/	/	cs@firealert.com.hk

預先批核產品 編號 PA code	產品類型 Product Type	產品名稱 Product name	供應商名稱（英文） Vendor (Eng)	供應商名稱（中文） Ve ndor (Chi)	Contact number	Contact Email
PA25-113	棚架連牆器感測器 Scaffold Putlog Sensor	TIE.Ai	Sanfield Construction Innovations Limited	新輝建築創科有限公司	3480 7633	sciladm@shkp.com
PA25-167	棚架連牆器感測器 Scaffold Putlog Sensor	Scaffold Sensor	B Plus Technology Limited	百加科技有限公司	/	brandon.chan@b-plus.tech
PA25-168	棚架連牆器感測器 Scaffold Putlog Sensor	Smart Scaffolding Signboard	Transcendence Company Limited	海宏技術有限公司	2862 1724	/



# 附件 C Annex C – 補充資料 Supplementary Information

其他非CITF預先批核相關產品參考資料  
Reference Material of Related Non-CITF Pre-  
approved Products



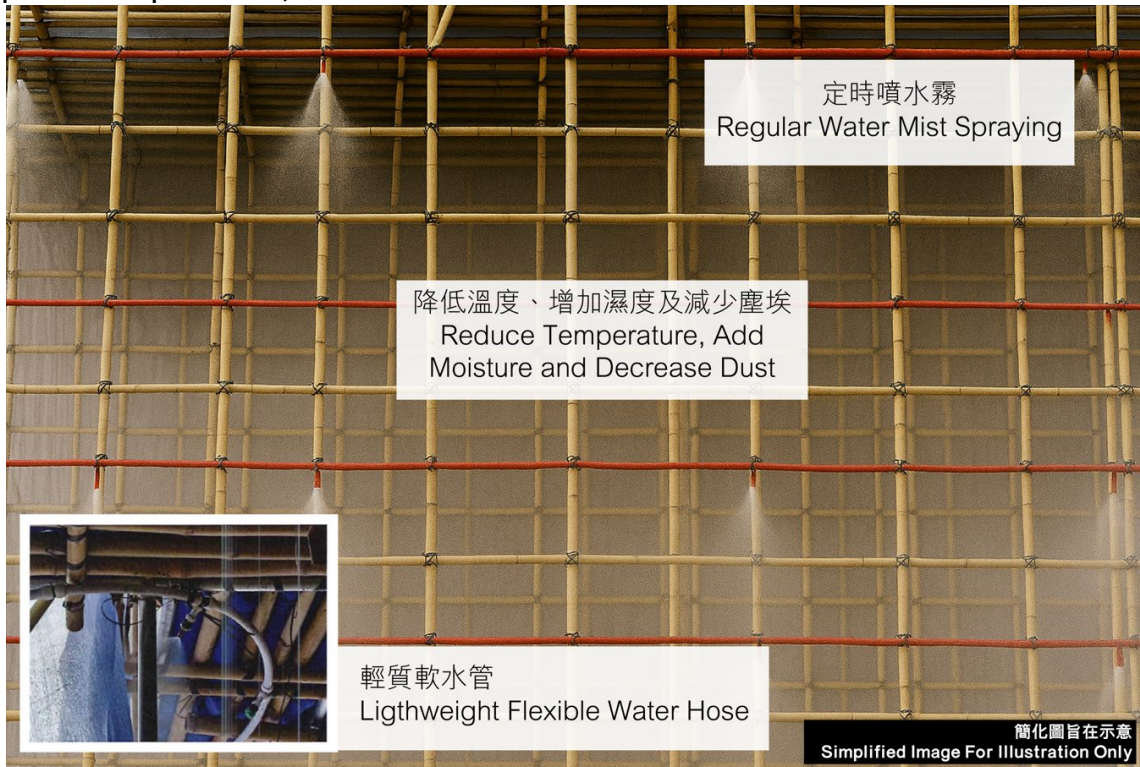
## 相關設置 Related Set-up

### 棚架上安裝自動灑水系統

### Water Mist Systems installed on the Scaffolding

可考慮在外牆搭設的棚架上安裝自動灑水裝置，定期噴灑水，以降低施工區域溫度、增加濕度並抑制粉塵。

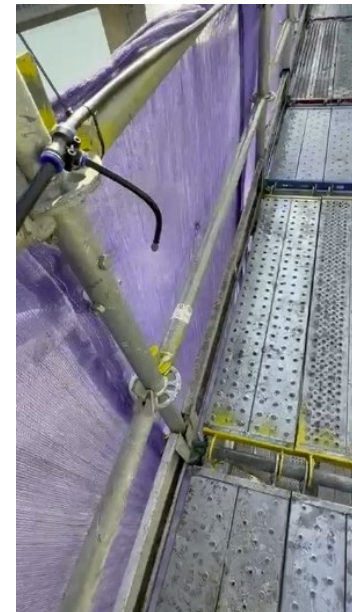
Automatic water mist system on scaffolding on the external wall can be considered. The system can operate at regular intervals, to help reduce workplace temperature, add moisture and control dust.



此產品並非CITF預先批核產品。This product is not CITF pre-approved product.



自動灑水系統定時器  
Water Mist System Timer



按固定間距安裝自動灑水噴嘴

Water mist spraying nozzles installed at regular spacing

## 非CITF預先批核 Non-CITF Pre-approved

灑水系統由軟喉及噴頭組成，環繞外牆棚，視乎覆蓋範圍。

The water mist system comprises flexible hoses connected to nozzles, arranged along the perimeter of the external wall scaffolding, depending on the coverage.



總控制箱參考圖片

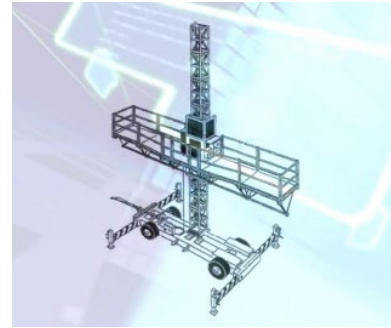
Reference Photo of Control Box





# 相關設置 Related Set-up

## 機械式爬升工作台 Tower Working Platform



### 非CITF預先批核 Non-CITF Pre-approved

可考慮採用更安全及更高效的外牆 RMAA 工程工作平台方案，例如機械式爬升工作台。

優點：可同時提升物料及設備（載重能力：1,000 公斤 – 4,200 公斤）  
提升工人安全  
長度及跨度靈活（由單桅 2.7 米至雙桅 40 米）  
減少視線阻擋  
降低對通風的影響

Adoption of safer and more efficient working platform solutions for RMAA works on external walls, such as **Tower Working Platform** can be considered.

Advantages:

- **Simultaneous lifting of materials and equipment** (Loading capacity: 1,000 kg – 4,200 kg)
- **Enhanced worker safety**
- **Flexible length and span** (From 2.7 m single mast to 40 m twin masts)
- **Minimal obstruction of view**
- **Reduced impact on ventilation**



## 相關設備 Related Device

非CITF預先批核  
Non-CITF Pre-approved

### 穿戴式攝影機

## Wearable Surveillance Camera for Monitoring Work Area

穿戴式攝影機能提升建築工地安全，透過錄影監控確保遵守安全要求，並記錄事故以供分析。它們提高工作透明度，使工友保持警惕。

Wearable cameras improve construction safety by recording site environment and documenting incidents for analysis to ensure safety compliance. These devices enhance visibility of site works, motivating workers to stay cautious.

